

## mRNA-HER2 (ERBB2)

mRNA-HER2 (ERBB2) is a ready-to-use mRNA product encoding Human Epidermal Growth Factor Receptor 2 (HER2/ERBB2). It is suitable for research on HER2-positive tumors such as breast cancer and gastric cancer, anti-HER2 targeted therapy studies, and mRNA delivery research. HER2 is a key member of the tyrosine kinase receptor family and plays a crucial role in cell proliferation and differentiation. Overexpression of HER2 is closely associated with malignant progression and poor prognosis in breast cancer, gastric cancer, and various other solid tumors, making it an important target for therapies such as Trastuzumab, Pertuzumab, and ADC drugs like Enfortumab Vedotin.

Name	Cat.No	Scale	State
mRNA-HER2 (ERBB2)	HX-mRNA043	1mg	Lyophilized/Liquid

**Concentration:** 1mg/mL

**Storage Buffer:** ddH<sub>2</sub>O pH=7.0

**mRNA length:** 4065 nt

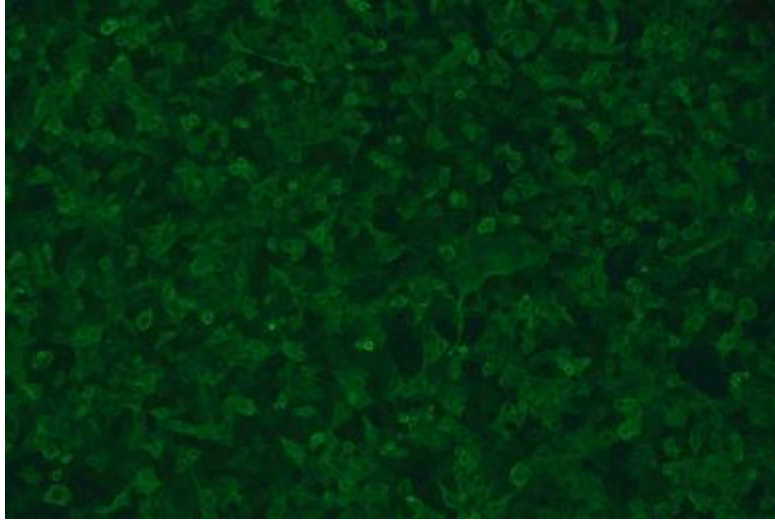
**Amino acid sequence size:** 1255 kDa

**Handling and Storage:** store at – 80°C for long term

**Cell Expression result:**

Cell Line: A549 Culture Plate: 96-well plate Cell Conluency: 80%

Transfection Dose: 200 ng per well



**Amino acid sequence:**

MELAALCRWGLLLALLPPGAASTQVCTGTMKLRLPASPETHLDMLRHLYQGCQVV  
 QGNLELTYLPTNASLSFLQDIQEVQGYVLIAHNQVRQVPLQRLRIVRGTQLFEDNYAL  
 AVLDNGDPLNNTTPTVTGASPGGLRELQLRSLTEILKGGVLIQRNPQLCYQDTILWKDI  
 FHKNNQLALTLIDTNRSRACHPCSPMCKGSRCWGESSEDCQSLTRTV CAGGCARCK  
 GPLPTDCCHEQCAAGCTGPKHSDCLACLHFNHSGICELHCPALVTYNTDTFESMPN  
 PEGRYTFGASCVTACPYNYLSTDVGSCTLVCPLHNQEVTAE DGTQRCEKCSKPCARV  
 CYGLGMEHLREVRAVTSANIQEFAGCKKIFGSLAFLPESFDGDPASNTAPLQPEQLQ  
 VFETLEEITGYLYISAWPDSLPLDSVFNQLQVIRGRILHNGAYS LTLQGLGISWLGLRSL  
 RELGSGLALIHNTHLCFVHTVPWDQLFRNPHQALLHTANRPEDECVGEG LACHQL  
 CARGHCWGPPTQCVNCSQFLRGQECVEECRVLQGLPREYVNARHCLPCHPECQ  
 PQNGSVTCFGPEADQCVACAHYKDPFFCVARCP SGVKPDL SYMPIWKFPDEEGACQ  
 PCPINCTHSCVDLDDKGC PAEQRASPLTSIISAVVGILLVVVLGVVFGILIKRRQQKIRK  
 YTMRRLLQETELVEPLTPSGAMPNQAQM RILKETELRKVKVLGSGAFGT VYKGIWIPD  
 GENVKIPVAIKVLRENTSPKANKEILDEAYVMAGV GSPYVSRLLGICLTSTVQLVTQLM  
 PYGCLLDHVREN RGLGSQDLLNWCMQIAKGMSYLEDVRLVHRDLAARNVLVKSP  
 NHVKITDFGLARLLDIDETEHADGGKVPIKWMAL ESILRRRFTHQSDVWSYGVTV  
 WELMTFGAKPYDGIPAREIPDLLEKGERLPQPPICTIDVYMIMVKCWMIDSECRPRFR  
 ELVSEFSRMARDPQRFVVIQNE DLGPASPLDSTFYRS LLEDDDMGDLVDAEEYLVPQ  
 QGFFCPDPAPGAGGMVHHRHRSSSTRSGGDLTLGLEPSEEEAPRSPLAPSEGAGS  
 DVFDGDLGMGA AKGLQSLPTHDP SPLQRYS EDPVPLPSETDG YVAPLTCSPQPEYV  
 NQPDVRPQPPSPREGPLPAARPAGATLERPKT LSPGKNGVVKDVFAFGGAVENPEYL  
 TPQGGAAPQHPPPAFSPA FDNLYYWDQDPPER GAPPSTFKGTPTAENPEYLGLDVP  
 V