

mRNA-CD22

mRNA-CD22 is a ready-to-use mRNA product encoding the CD22 molecule. It is suitable for B cell immunology research, CAR-T and immunotherapy studies, mRNA delivery research, and investigations into B cell-related diseases. CD22 is a B cell-specific transmembrane glycoprotein belonging to the SIGLEC (Sialic acid-binding immunoglobulin-like lectins) family and plays an important role in B cell activation, signal regulation, and immune tolerance. It is primarily expressed on mature B cells and is highly expressed in B cell leukemias and lymphomas, making it an important target for CAR-T cell immunotherapy.

Name	Cat.No	Scale	State
mRNA-CD22	HX-mRNA033	1mg	Lyophilized/Liquid

Concentration: 1mg/mL

Storage Buffer: ddH₂O pH=7.0

mRNA length: 2844 nt

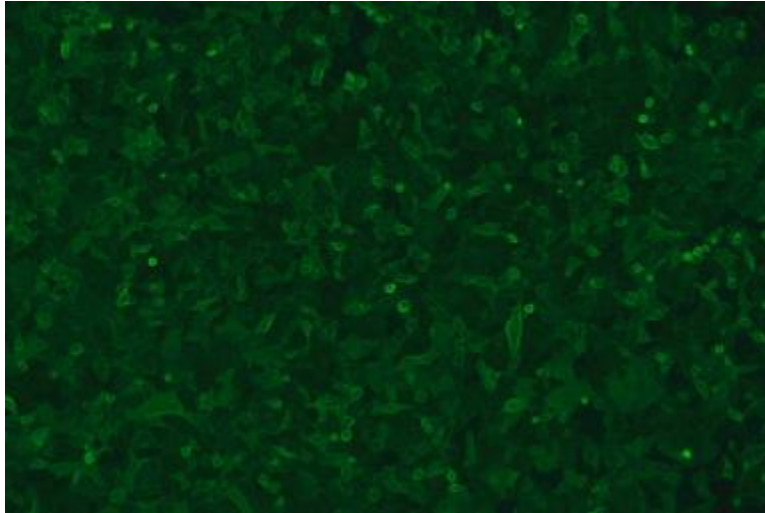
Amino acid sequence size: 848 kDa

Handling and Storage: store at – 80°C for long term

Cell Expression result:

Cell Line: A549 Culture Plate: 96-well plate Cell Confluency: 80%

Transfection Dose: 200 ng per well



Amino acid sequence:

MEAPAQLLFLLLLWLPD TTGDSSKWWFEHPETLYAWEGACVWIPCTYRALDGDLESF
ILFHNPEYNKNTSKFDGTRLYESTKDGKVPSEQKRVQFLGDKNKNCTLSIHPVHLND
SGQLGLRMESKTEKWMERIHNLVSRPFPPHIQLPPEIQESQEVTLTCLLNFSYGYPI
QLQWLLEGVPMRQAAVTSTSLTIKSVFTRSELKFSPQWSHHGKIVTCQLQDADGKFL
SNDTVQLNVKHTPKLEIKVTPSDAIVREGDSVTMTCEVSSSNPEYTTVSWLKDGTSL
KKQNTFTLNLREVTKDQSGKYCCQVSNVGPGRSEEVFLQVQYAPEPSTVQILHSPA
VEGSQVEFLCMLANPLPTNYTWYHNGKEMQGRTEEKVHIPKILPWHAGTYSCVAE
NILGTGQRGPGAELDVQYPPKKVTTVIQNPMPIREGDTVTLSCNYNSSNPSVTRYEW
KPHGAWEEPSLGV LKIQNVGWDNTTIACAACNSWCSWASPVALNVQYAPRDVVR
KIKPLSEIHSGNSVSLQCDFSSSHPKVQFFWEKNGRLLGKESQLNFDSISPEDAGSY
SCWVNNSIGQTASKAWTLEVLYAPRRLRVSMSPGDQVMGKSATLTCESDANPPVS
HYTWFDWNNQSLPYHSQKLRLEPVKVQHSGAYWCQGTNSVGKGRSPLSTLTVYYS
PETIGRRVAVGLGSLAILILAICGLKLQRRWKRTQSQQGLQENSSGQSFVVRNKKV
RRAPLSEDPHSLGCYNPMMEDGISYTTLRFPENIPRTGDAESSEMQRPPDCDDT
VTYSALHKRQVGDYENVIPDFPEDEGIHYSELIQFGVGERPQAQENVVILKH